



977-0127



977-0128/9
Pre-shaped



977-0130



977-0133



977-0134

Patellar Ligaments

Item	Catalog #
Split (Hemi)	977-0127
Pre-shaped, 9mm	977-0128
Pre-shaped, 10mm	977-0129
Whole Patella	977-0126

Also available non-irradiated

Tibialis Tendon

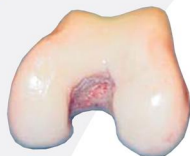
Item	Catalog #
Tibialis Tendon Length: 23cm+ Diameter: 6.5mm+	977-0130
Semi-T	977-0140
Gracilis Tendon	977-0141
Peroneus Longus	977-0145

Also available non-irradiated

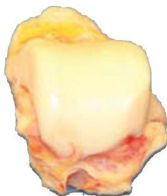
Achilles Tendon

Item	Catalog #
With Bone Block with Sheath (17cm+)	977-0133
Pre-cut 10mm	977-0134

Also available non-irradiated



Femoral Condyle



Ankle Talus

Fresh Grafts: A special program providing surgeons with the fresh osteochondral allografts that are often preferable as a salvage treatment in post-traumatic situations after periarticular fracture or in lesions in which there is a significant bony deficit. Fresh allografts may also be used after failure of other resurfacing techniques, such as microfracture, osteochondral transfers, or autologous chondrocyte implantation.

Fresh Femoral Condyle

Item	Catalog #
Hemi-a, Left*	Special order
Hemi-b, Left*	Special order
Hemi-c, Right*	Special order
Hemi-d, Right*	Special order
Whole, Left*	Special order
Whole, Right*	Special order

Ankle Talus

Item	Catalog #
Ankle Talus Left*	Special order
Ankle Talus Right*	Special order



Blend Putty

5 cc 977-0496
10 cc 977-0497

- ◆ DBM and cancellous bone in a reverse phase medium
- ◆ Osteoconductive & osteoinductive



Blend Paste

1 cc 977-0490
3 cc 977-0491
8 cc 977-0492



DBM Putty

1 cc 977-0087
5 cc 977-0091
10 cc 977-0088

- ◆ DBM in a reverse phase medium
- ◆ Osteoinductive



DBM Gel

1 cc 977-0498
5 cc 977-0499
10 cc 977-0500



Cancellous Chips
(4-10 mm)

5 cc 977-0075
15 cc 977-0076
30 cc 977-0077
60 cc 977-0078
90 cc 977-0079



Cortical/Cancellous Granules
(4-10 mm)

15 cc 977-0060
30 cc 977-0061



Cancellous Granules
(1-3.99 mm)

15 cc 977-0066
30 cc 977-0065



DBM Powder
(125-850 microns)

2.5 cc 977-0017
5 cc 977-0018
10 cc 977-0019