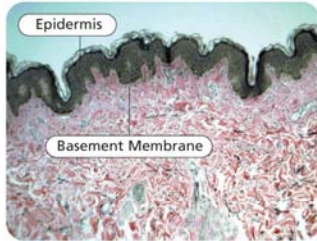
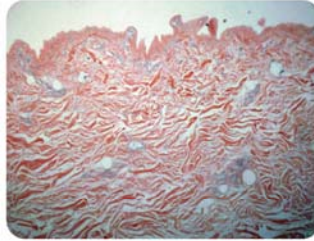


Histology:

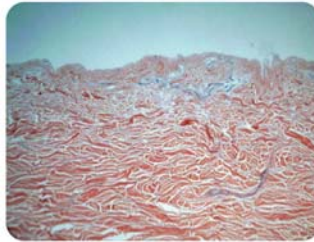


Normal Skin

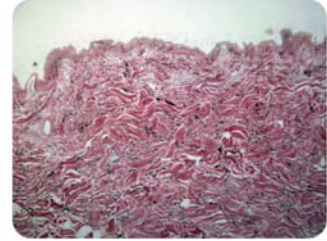
TranZgraft ACD removes the epidermal layer while maintaining an intact basement membrane. Note the similarity in the structural integrity of the collagen matrix pre- and post-cold gamma precision dose sterilization as well as the absence of immunogenic cellular elements.



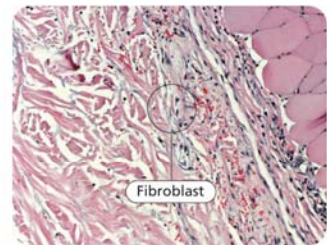
ACD Pre-Cold Gamma Precision Dose Sterilization



ACD Post-Cold Gamma Precision Dose Sterilization



Components including elastin, hyaluronan and vitronectin, all vital for promoting cell attachment and growth, remain present after processing and sterilization. VVG Stain: Elastin appears as darkly stained strands.



In vivo animal testing reveals rapid host-cell incorporation. Note fibroblast infiltration from host into ACD at 4-day post implantation.